



DENTAL RESIN & 3D PRINTER

MANUFACTURER

Designed specifically for dental

OEM/ODM

01

COMPANY PROFILE

Company profile ● 01-01

02

PRODUCT INTRODUCTION

Product introduction ● 03-20

— PRINTER

Dental 3d printer ● 02-07

— P-P

Post-processing ● 08-09

— RESIN

Dental resin ● 10-14

03

PRINT PARAMETERS

Parameters ● 15-16

Dental 405nm 3D printing PRODUCT FAMILY



The PioNext series is a sub-brand of Piocreat that includes LCD & DLP printers, and dental resins. Representative products for dental applications includes DJ89PLUS, D158, D160, D150, D190, D136, UV02, CD-X3, etc.

Complete certification:

PioNext series products have passed FCC certification, EU RoHS certificate, UL certification, European CE certification, and high-tech product certification. All products have passed scientific and technological appraisal and have product quality inspection.



Strong production capacity:

We have more than 2,000 employees and 20,000 square meters of production space, which can well meet the needs of customer equipment orders and processing services.



Company headquarters



Adequate inventory



Equipment production department

DJ89PLUS

8K 10.3" LCD 3D printer

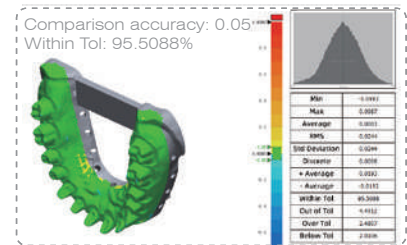
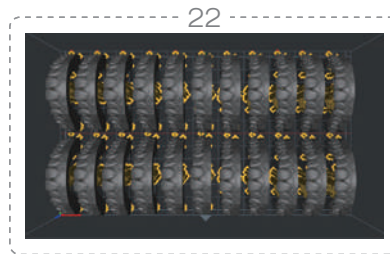
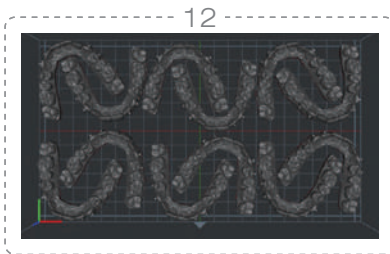
- 8K
29µm pixel size
●

10.3" 8K(7680*4320px) monochrome screen
precise sculpting of model details
- ↑↑↑
Heating chamber
●

chamber heating(20-35°C)
- ↻
Automatic feeding
●

Avoid lack of resin material
- |
Stable Z-axis structure
●

Dual linear guide rails + ball screw



SPECIFICATIONS	DJ89PLUS
Molding tech	LCD
Print size	228×128×100mm
Machine size	450×290×500mm
Print speed	Max.60mm/h
Layer thickness	0.01-0.1mm
XY axis accuracy	29µm
Printing screen	10.3 inch, 8K monochrome
Rated voltage	AC100-240V
Slicer	Piocreat BOX (Win7 or above X64, Mac)
Language	13 languages
N.W.	21.75KG
G.W.	26.28KG

D136

7K 13.6" LCD 3D printer

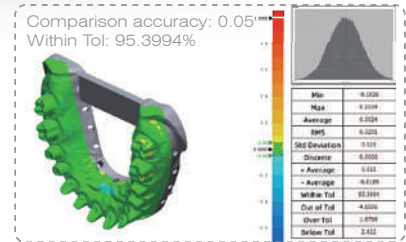
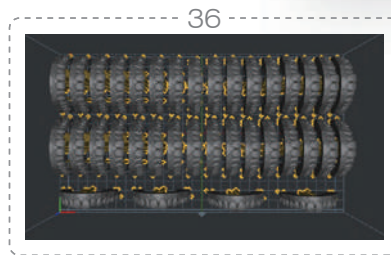
- 7K
46µm pixel size
●

13.6" 7K(6480*3600px) monochrome screen
precise sculpting of model details
- ⌘
High speed release film
●

Less release resistance
higher printing success rate
- ✕
Large printing size
●

298×165×300mm
- ⌚
Stable Z-axis structure
●

Dual linear guide rails + ball screw



SPECIFICATIONS	D136
Molding tech	LCD
Print size	298×165×300mm
Machine size	480×376×770mm
Print speed	Max.60mm/h
Layer thickness	0.01-0.1mm
XY axis accuracy	46µm
Printing screen	13.6 inch, 7K monochrome
Rated voltage	AC100-240V
Slicer	Piocreat BOX (Win7 or above X64, Mac)
Language	13 languages
N.W.	34.7KG
G.W.	52.15KG

D150

Adjustable light intensity: 6000-20000 μ w/cm²



Fast print

Print speed up to 80mm/h
1920*1080px



High speed release film

Less release resistance
higher printing success rate

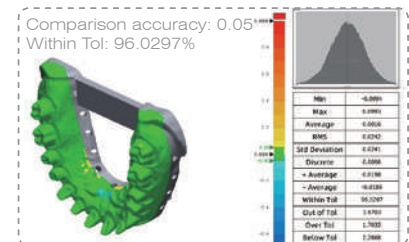
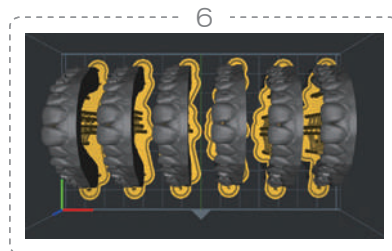


Adjustable light intensity

Reduce exposure time



Light engine life 30,000+ hours



SPECIFICATIONS	D150
Molding tech	DLP
Print size	144×81×100mm
Machine size	330×300×675mm
Print speed	Max.80mm/h
Layer thickness	0.025-0.1mm
Pixel size	75 μ m
Rated voltage	AC100-240V
Slicer	Piocrat BOX (Win7 or above X64, Mac)
Language	13 languages
N.W.	22.11KG
G.W.	26.5KG

D158

Texas instruments digital micromirror technology



Automatic lifting cover

Finger touch lifting



62µm pixel size

2560*1440px



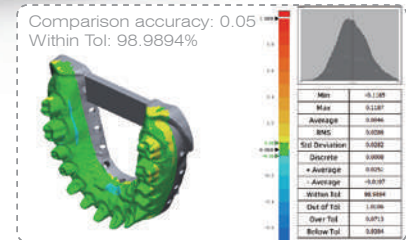
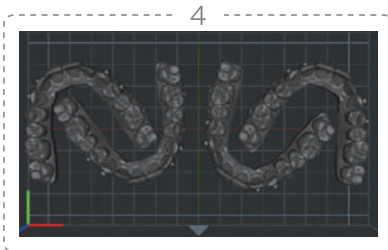
High speed release film

Less release resistance
higher printing success rate



Stable Z-axis structure

Dual linear guide rails + ball screw



SPECIFICATIONS	D158
Molding tech	DLP
Print size	158×89×100mm
Machine size	280×280×587mm
Print speed	Max.60mm/h
Layer thickness	0.025-0.1mm
Pixel size	62µm
Rated voltage	DC 24V
Slicer	Piocrat BOX (Win7 or above X64, Mac)
Language	13 languages
N.W.	13KG
G.W.	15KG

D160

Texas instruments digital micromirror technology

62µm pixel size

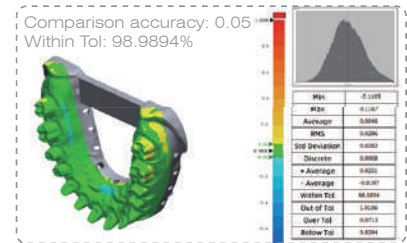
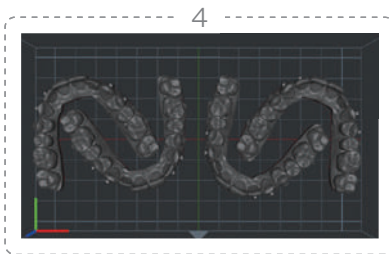
2560*1440px

High speed release film

Less release resistance
higher printing success rate

Stable Z-axis structure

Dual linear guide rails + ball screw



SPECIFICATIONS	D160
Molding tech	DLP
Print size	158×89×100mm
Machine size	280×264×573mm
Print speed	Max.60mm/h
Layer thickness	0.025-0.1mm
Pixel size	62µm
Rated voltage	DC 24V
Slicer	Piocreat BOX (Win7 or above X64, Mac)
Language	13 languages
N.W.	14KG
G.W.	17.5KG

D190

4K DLP 3D printer for dental



High-precision 4K DLP

3840*2160px



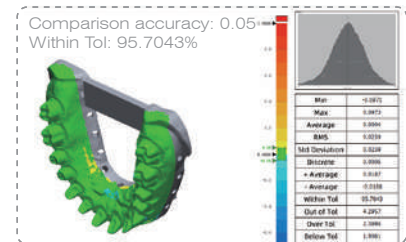
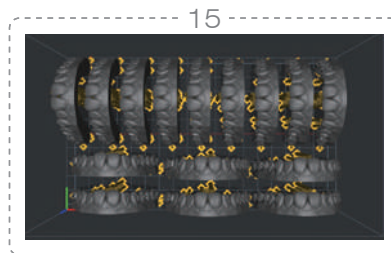
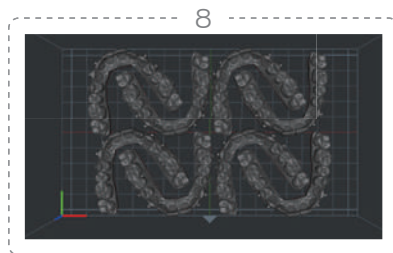
High stability

Very high print success rate.



Strong Z-axis lifting power

57 Stepper motor continuously outputs lifting power



SPECIFICATIONS	D190
Molding tech	DLP
Print size	192×108×100mm
Machine size	330×300×695mm
Print speed	Max.60mm/h
Layer thickness	0.025-0.1mm
Pixel size	50μm
Rated voltage	AC100-240V
Slicer	Piocrat BOX (Win7 or above X64, Mac)
Language	13 languages
N.W.	23.5KG
G.W.	27.5KG

- 365nm / 385nm / 405nm customizable

UV02

High speed curing machine adjustable light intensity



Fast curing

Curing usually takes 1-5 minutes, reduces distortion due to post-cure exotherm.



Adjustable light power

Adjustable light intensity percentage value 5%-100%



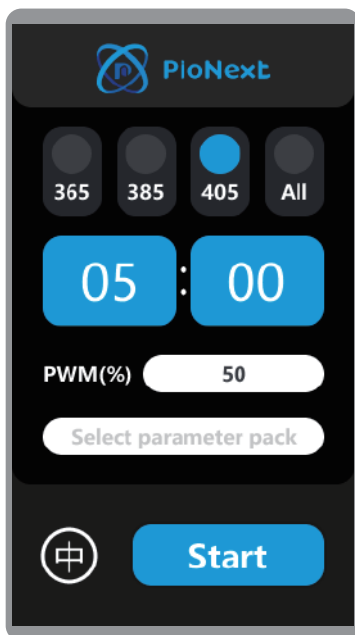
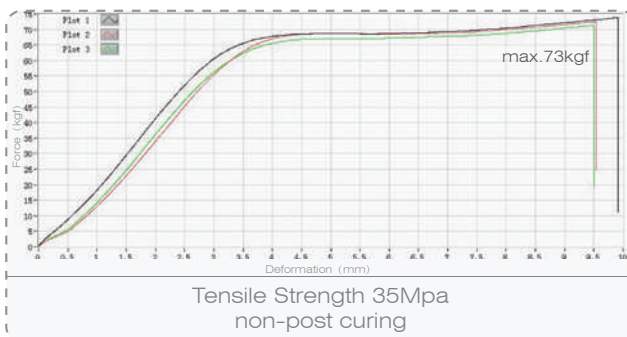
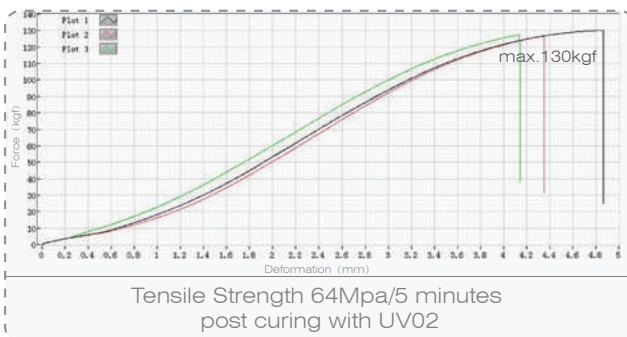
Adjustable wave length

365nm / 385nm / 405nm customizable



Presets and customizable cure settings

8 groups of data



SPECIFICATIONS	UV02
Machine properties	High speed UV curing
Machine color	White / Gray
Curing size	D180×H120mm
Machine Size	366×300×250mm
Package Size	464×386×334mm
Rated Power	360W
Input Voltage	100-120V~/200-240V~,50-60Hz
Adjustable light intensity ratio	5-100%
Curing optional time	00:01 - 30:00(Max.30min)
N.W.	11KG
G.W.	14KG

UV02 Recommended Curing Parameter

Resin model	Wavelength	Percentage of Light Intensity	Recommended time	curing with water
PN-model	385、405nm	100%	2 (1,5) min	Yes
PN-model 2.0	385、405nm	80%	2 (1,5) min	Yes
PN-RD	385、405nm	100%	3 (2,8) min	Yes
PN-TEMP	385、405nm	100%	10 (5,15) min	Yes
PN-SG	385、405nm	80%	3 (1,8) min	Yes
PN-CAST	385、405nm	100%	3 (1,8) min	Yes
PN-WM	385、405nm	100%	3 (1,5) min	Yes
PN-GM	385、405nm	100%	10s (5s, 30s)	Yes
PN-Try-in	385、405nm	100%	10 (5,15) min	Yes
PN-Denture	385、405nm	100%	15 (10,20) min	Yes

*UV02 is a special equipment for dentistry. Long-time exposure of general consumer resins on the market may cause the risk of model cracking.

CD-X3

Simple operation, one-click cleaning

SPECIFICATIONS CD-X3

Machine properties	Ultrasonic Cleaning
Tank size	240×135×100(L*W*H)mm
Machine size	265×160×225(L*W*H)mm
Volume	3L
Ultrasonic frequency	40kHz
Ultrasonic power	120W
Heating power	100W
Package size	310×210×280mm
N.W.	3.2KG
G.W.	3.6KG



Before cleaning

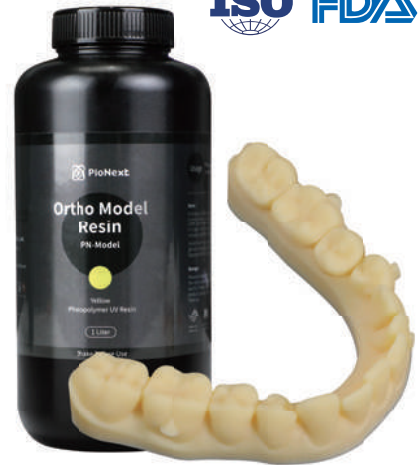


After cleaning

Ortho model resin

Temperature resistant

● yellow ● beige ● gray , customizable



SPECIFICATIONS	PN-Model	
Hardness	ASTM D2240	>D90
Flexural modulus	ASTM D790	>1500MPa
Flexural strength	ASTM D790	>50MPa
Elongation at break	ASTM D638	>5
Heat deflection temperature	ASTM D648@66PSI	>120°C
Cytotoxicity	ISO 10993-5	
Allergenicity	ISO 10993-10	
Irritant	ISO 10993-10	

Machine model	Number of layouts (regular size)	1KG resin printable quantity	Printing time (100µm)	Printing time (50µm)
DJ89PLUS	8-10	≥ 80	23min	44min
D158/D160	4-5	≥ 80	17min	28min
D150	2-3	≥ 80	15min	28min
D136	15-17	≥ 80	41min	72min

Ortho model resin 2.0

Cost-effective

● yellowish brown ● gray , customizable

Material certification
FDA/NMPA



SPECIFICATIONS	PN-Model 2.0	
Hardness	ASTM D2240	>D85
Flexural modulus	ASTM D790	>1200MPa
Flexural strength	ASTM D790	>85MPa
Tensile modulus	ASTM D638	>700MPa
Tensile strength	ASTM D638	>30MPa
Heat deflection temperature	ASTM D648@66PSI	>100°C

Machine model	Number of layouts (regular size)	1KG resin printable quantity	Printing time (100µm)	Printing time (50µm)
DJ89PLUS	8-10	≥ 80	23min	44min
D158/D160	4-5	≥ 80	17min	28min
D150	2-3	≥ 80	15min	28min
D136	15-17	≥ 80	41min	72min

Removable die model resin

Scratch resistance

● wheat complexion ● gray , customizable



SPECIFICATIONS	PN-RD	
Hardness	ASTM D2240	>D90
Flexural modulus	ASTM D790	>2000MPa
Flexural strength	ASTM D790	>60MPa
Elongation at break	ASTM D638	>10
Cytotoxicity	ISO 10993-5	
Allergenicity	ISO 10993-10	
Irritant	ISO 10993-10	

Machine model	Number of layouts (regular size)	1KG resin printable quantity	Printing time (100μm)	Printing time (50μm)
DJ89PLUS	10-11	≥ 140	43min	77min
D158/D160	4-5	≥ 120	43min	70min
D150	4	≥ 150	29min	56min
D136	18-19	≥ 80	47min	87min

Temporary restoration resin

A1/A2/A3/B1/BL1

● A1 ● A2 ● A3 ● B1 ● BL1 , customizable



SPECIFICATIONS	PN-Temp	
Hardness	ASTM D2240	>D90
Flexural modulus	ASTM D790	>2200MPa
Flexural strength	ASTM D790	>120MPa
Tensile modulus	ASTM D638	>700MPa
Tensile strength	ASTM D638	>80MPa
Elongation at break	ASTM D638	>8%
Water absorption	ASTM D570	<1.5%
Cytotoxicity	ISO 10993-5	
Allergenicity/Irritant	ISO 10993-10	

Machine model	Number of layouts (regular size)	1KG resin printable quantity	Printing time (100μm)	Printing time (50μm)
DJ89PLUS	11-12	≥ 300	45min	81min
D158/D160	6-7	≥ 265	31min	60min
D150	3-4	≥ 280	38min	74min

Surgical guide resin

High transparency

○ Transparent



SPECIFICATIONS	PN-SG	
Hardness	ASTM D2240	>D80
Tension strength	ASTM D638	>40MPa
Elongation at Break	ASTM D638	>15%
Flexural Strength	ASTM D790	>50MPa
Cytotoxicity	ISO 10993-5	
Allergenicity	ISO 10993-10	
Irritant	ISO 10993-10	

Machine model	Number of layouts (regular size)	1KG resin printable quantity	Printing time (100µm)	Printing time (50µm)
DJ89PLUS	10-11	≥ 180	44min	79min
D158/D160	3-4	≥ 150	39min	74min
D150	3-4	≥ 150	35min	68min
D136	15-16	≥ 195	50min	90min

Dental casting resin

Residue free

● cherry red ● green



SPECIFICATIONS	PN-Cast	
Hardness	ASTM D2240	>D80
Flexural modulus	ASTM D790	>1500MPa
Flexural strength	ASTM D790	>70MPa
Bakeout temperature	/	1.5h@850°C

Machine model	Number of layouts (regular size)	1KG resin printable quantity	Printing time (100µm)	Printing time (50µm)
DJ89PLUS	28-29	≥ 600	34min	60min
D158/D160	11-12	≥ 550	27min	52min
D150	10-11	≥ 550	27min	52min
D136	45-48	≥ 600	37min	66min

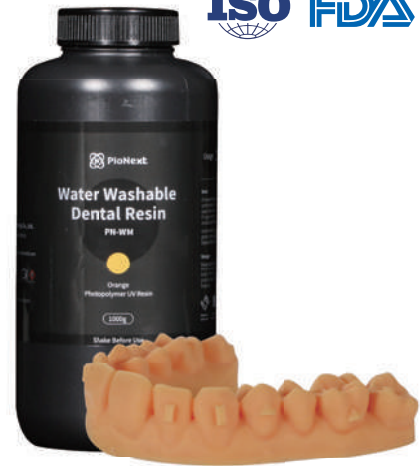
Water-washable dental resin

Water-washable

● orange
 ● gray
 ● clear blue , customizable



SPECIFICATIONS	PN-WM	
Hardness	ASTM D2240	>D85
Flexural modulus	ASTM D790	>1200MPa
Flexural strength	ASTM D790	>60MPa
Tensile modulus	ASTM D638	>700MPa
Tensile strength	ASTM D638	>30MPa
Elongation at break	ASTM D638	>10J/m
Heat deflection temperature	ASTM D648@66PSI	>80°C



Machine model	Number of layouts (regular size)	1KG resin printable quantity	Printing time (100μm)	Printing time (50μm)
DJ89PLUS	5-6	≥ 80	29min	44min
D158/D160	2-3	≥ 80	32min	61min
D150	2-3	≥ 80	30min	55min
D136	11-12	≥ 100	35min	62min

Gingiva resin

Excellent elasticity

● gingival red



SPECIFICATIONS	PN-GM	
Hardness	ASTM D2240	>A30
Elongation at break	ASTM D638	>80%
Tear strength	ASTM D624	>5N/mm



Machine model	Number of layouts (regular size)	1KG resin printable quantity	Printing time (100μm)	Printing time (50μm)
DJ89PLUS	29-30	≥ 1000	34min	59min
D158/D160	10-12	≥ 1100	30min	57min
D150	7-8	≥ 700	30min	57min
D136	40-42	≥ 1100	40min	71min

Try-in resin

Wear and use for a short period (1 month)



● red ● A2, customizable

SPECIFICATIONS	PN-Try-in	
Hardness	ASTM D2240	>D80
Flexural modulus	ASTM D790	>2200MPa
Flexural strength	ASTM D790	>100MPa
Tensile modulus	ASTM D638	>700MPa
Tensile strength	ASTM D638	>80MPa
Elongation at break	ASTM D638	>8%
Water absorption	ASTM D570	<1.5%
Cytotoxicity	ISO 10993-5	
Allergenicity/Irritant	ISO 10993-10	



Machine model	Number of layouts (regular size)	1KG resin printable quantity	Printing time (100μm)	Printing time (50μm)
DJ89PLUS	5-6	≥ 60	55min	75min
D158/D160	2-3	≥ 45	40min	70min
D150	2-3	≥ 45	40min	67min

Denture base resin

Can be worn for a long time (1 to 3 years)



● red

SPECIFICATIONS	PN-Denture	
Hardness	ASTM D2240	>D90
Flexural modulus	ASTM D790	>2500Mpa
Flexural strength	ASTM D790	> 130Mpa
Tensile modulus	ASTM D638	>850MPa
Tensile strength	ASTM D638	>85MPa
Elongation at break	ASTM D638	>10%
Water absorption	ASTM D570	<1.0%
Cytotoxicity	ISO 10993-5	
Allergenicity/Irritant	ISO 10993-10	



Machine model	Number of layouts (regular size)	1KG resin printable quantity	Printing time (100μm)	Printing time (50μm)
DJ89PLUS	5-6	≥ 60	55min	75min
D158/D160	2-3	≥ 45	40min	70min
D150	2-3	≥ 45	40min	67min

Suggested table of printing parameters for D158 / D160

Resin name	Layer thickness (s)	Initial exposure time (s)	Exposure time (s)	Lift height (mm)	Motor speed (mm/s)	Lights off delay (s)	Bottom layer (layer)
PN-model	0.05	40	2.3	7	7	1	1
PN-model 2.0	0.05	30	2.3	7	7	1	1
PN-RD	0.05	40	2.3	7	5	1,4 (full model)	1
PN-TEMP	0.05	40	2.1	7	5	1	2
PN-SG	0.05	40	2.9	7	5	1	2
PN-CAST	0.05	40	2.8	7	5	1	2
PN-WM	0.05	30	1.9	7	7	1	1
PN-GM	0.05	15	2.5	7	2	1	1
PN-Try-in	0.05	40	2.2	7	5	1	2
PN-Denture	0.05	40	2.1	7	5	1	2

Suggested table of printing parameters for D150

Resin name	Layer thickness (s)	Initial exposure time (s)		Exposure time (s)		Lift height (mm)		Motor speed (mm/s)		Lights off delay (s)		Bottom layer (layer)	
		12000	20000	12000	20000	12000	20000	12000	20000	12000	20000	12000	20000
PN-model	0.05	10-25	10-15	1.8	0.8	8	4	1	1	2	3		
PN-model 2.0	0.05	10-25	10-15	2	0.9	8	4	1	1	2	3		
PN-RD	0.05	10-25	10-15	2.2	1.1	8	4	1,4 (full model)		2	3		
PN-TEMP	0.05	15-25	20-30	2.2	1.2	8	4	2	2	3	3		
PN-SG	0.05	20-25	25-35	2.5	2	8	4	3	3	3	3		
PN-CAST	0.05	20-25	15-25	2.4	1.1	8	4	3	2	3	3		
PN-WM	0.05	30-35	25-30	1.2	0.6	8	4	1	2	3	3		
PN-GM	0.05	20-30	15-25	2	0.9	8	4	3	3	3	3		
PN-Try-in	0.05	15-25	10-20	2	0.9	8	4	1	2	3	3		
PN-Denture	0.05	15-25	10-20	2	0.9	8	4	1	2	3	3		

Suggested table of printing parameters for DJ89PLUS

Resin name	Layer thickness (s)	Initial exposure time (s)	Exposure time (s)	Lift height (mm)	Motor speed (mm/s)	Lights off delay (s)	Bottom layer (layer)
PN-model	0.05	140	2.8	8	7	1	1
PN-model 2.0	0.05	30	2.8	8	7	1	1
PN-RD	0.05	40	2.8	8	5	1, 4 (full model)	1
PN-TEMP	0.05	40	3.2	8	5	1	2
PN-SG	0.05	40	3.4	8	5	1	2
PN-CAST	0.05	40	4.5	8	5	1	2
PN-WM	0.05	30	1.9	8	5	1	1
PN-GM	0.05	20	3.2	8	2	1	1
PN-Try-in	0.05	40	3.2	8	5	1	2
PN-Denture	0.05	40	3.3	8	5	1	2

Suggested table of printing parameters for D136

Resin name	Layer thickness (s)	Initial exposure time (s)	Exposure time (s)	Lift height (mm)	Motor speed (mm/s)	Lights off delay (s)	Bottom layer (layer)
PN-model	0.05	30-35	2.5	8	3	1	3
PN-model 2.0	0.05	30-35	2.7	8	3	1	3
PN-RD	0.05	30-35	3	8	3	2	3
PN-TEMP	0.05	35-40	3	8	1	3	3
PN-SG	0.05	45-55	3.4	8	1	3	3
PN-CAST	0.05	20-30	4.2	8	2	3	3
PN-WM	0.05	40-45	2	8	3	1	3
PN-GM	0.05	40-45	3	8	2	3	3
PN-Try-in	0.05	30-35	3	8	2	1	3
PN-Denture	0.05	30-35	3	8	2	1	3

WORRY-FREE SERVICE SYSTEM

Comprehensive service and technical support

3D printer operation

Slicing software
operation

3D printing
technology training



Provide 7*12 hours online
technical support service



Free upgrade and
inspection of product
software failures



Product failure
free detection



The product provides a
one year warranty from
the date of arrival



24-hour after-sales
service mailbox
after@piocreat3d.com



Professional after
sales expert to follow up

www.piocreat3d.com

PIOCREAT

Shenzhen Piocreat 3D Technology Co.,Ltd.

📍 19F, JinXiuHongDu Building, Meilong Blvd, Longhua Dist, Shenzhen, China 518131

☎ Tel: +86 0755-2103-9743 / +86 199 2521 7796

✉ Technical support: after@piocreat3d.com

📧 Inquiry email: sales@piocreat3d.com

